

**Pasadena Lapidary Society
Installation Meeting & Holiday Dinner Party
Thursday, December 10, 2015**

This month our regular meeting will **not be at the Pasadena Library**. It will be at **The Lodge at Sierra Madre** — 33 East Sierra Madre Boulevard, Sierra Madre. See map on the next pages. This historic meeting and banquet hall was built in 1927 and our Society met there for a number of years prior to our current meeting location. It is only a block from our Workshop. The event will start at 5pm and end at 9pm. Access the hall from the lot behind the building where there is also parking. There is additional parking on the street and in lot behind Taylor's Meat Market on the corner of Baldwin and Sierra Madre.

Schedule:

5:00pm - 5:30pm Set up food items. Power available for hot plates.

5:00pm - 6:00pm Social Hour! Food drive donations accepted in the boxes by the door.

6:00pm - 7:00pm Pot-Luck Dinner

7:00pm - 9:00pm Club Business, Rockhounds Of The Year, Blind Gift Exchange

Pot-Luck Dinner: Please bring one of your favorite food dishes to serve 6. **If you need a suggestion, follow this guide:** If your last name starts with A, E, N, M, Q, T - please bring a main dish. If B, F, J, L, R or V - please bring a starch (potatoes, bread, rice, pasta, etc). If C, G, K, O, S, W or X - please bring a vegetable or salad, and if D, H, I, P, Y or Z please bring a dessert.

Trudy Krose has volunteered to bring the cups, plates, napkins and utensils! Soft drinks will be available and there is a kitchen to heat or refrigerate your item.



Food Donations for the Pantry at Friends In Deed In Pasadena

Once again we are providing food for the needy! Please clear your pantry to help the Pasadena Lapidary Society to help others. Each guest bringing a food item will receive a ticket for a drawing.

Non-Perishable Foods such as Peanut Butter, Tuna, Chicken, Chili, Beef Stew, Dry Beans, Pasta, Oats, Rice, Cereal, Milk (Shelf Stable or Powder), Jelly, Tomato Sauces, Soups, Cooking Oil and other Baking Items, the little soaps and shampoos from hotels and motels, all sorts of canned foods.

Perishable Foods such as Fresh Fruits and Vegetables from your garden, Milk, Yogurt, Cheese, Eggs, Cold Cuts and frozen Chicken.

Mystery Gift



Blind Gift Exchange: If you would like to participate in the gift exchange, please bring a wrapped gift. If the gift is gender-specific please indicate on the outside. Suggested value - unlimited. Suggested cost is \$5. The gift can be something you have made, collected or purchased.

Holiday Meeting Events



Items useful in lapidary or jewelry are always welcomed. As each member or guest is checked in, they will exchange their gift for a numbered ticket. At the gift exchange portion of the meeting, numbers will be drawn. When your number is drawn you may select a wrapped gift from those assembled. Stumped for ideas? In the past we've seen rare slabs and cabs, lapidary tool kits and gift certificates to places like Harbor Freight, Michaels, Hobby Lobby, etcetera.

Drawing: Keep the ticket you received from your food donation and your gift exchange. Following the gift exchange we will draw for prizes.



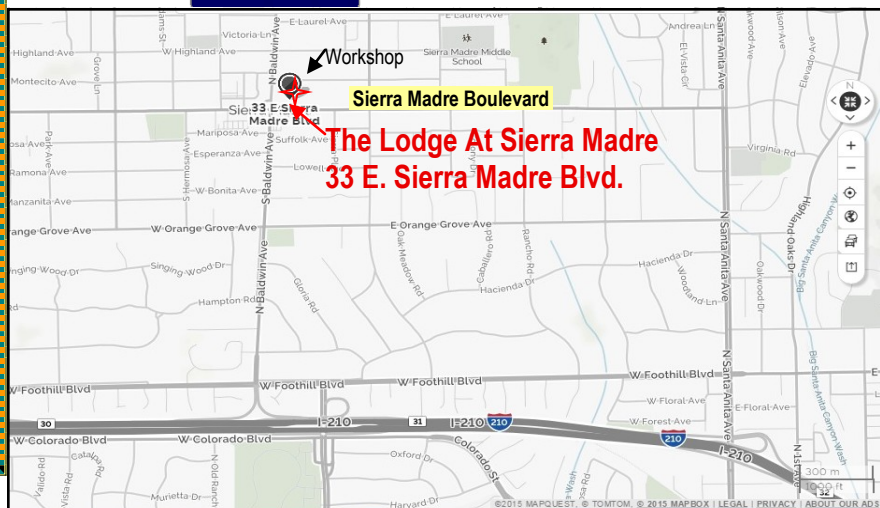
Be sure to wear your membership badge! We want others to know you! If you do not have a membership badge and would like to order one, contact Mark Nelson at (909) 996-1784 or at pasadenalapidary@aol.com.

Society shirts and vests will be available for purchase tonight by our Treasurer. If you would like to pre-order them, email your request to the Society at pasadenalapidary@aol.com.

Shirts are \$15. Most youth and adult sizes.
Vests are \$10 Most youth and adult sizes
Hats are \$11 Limited quantity

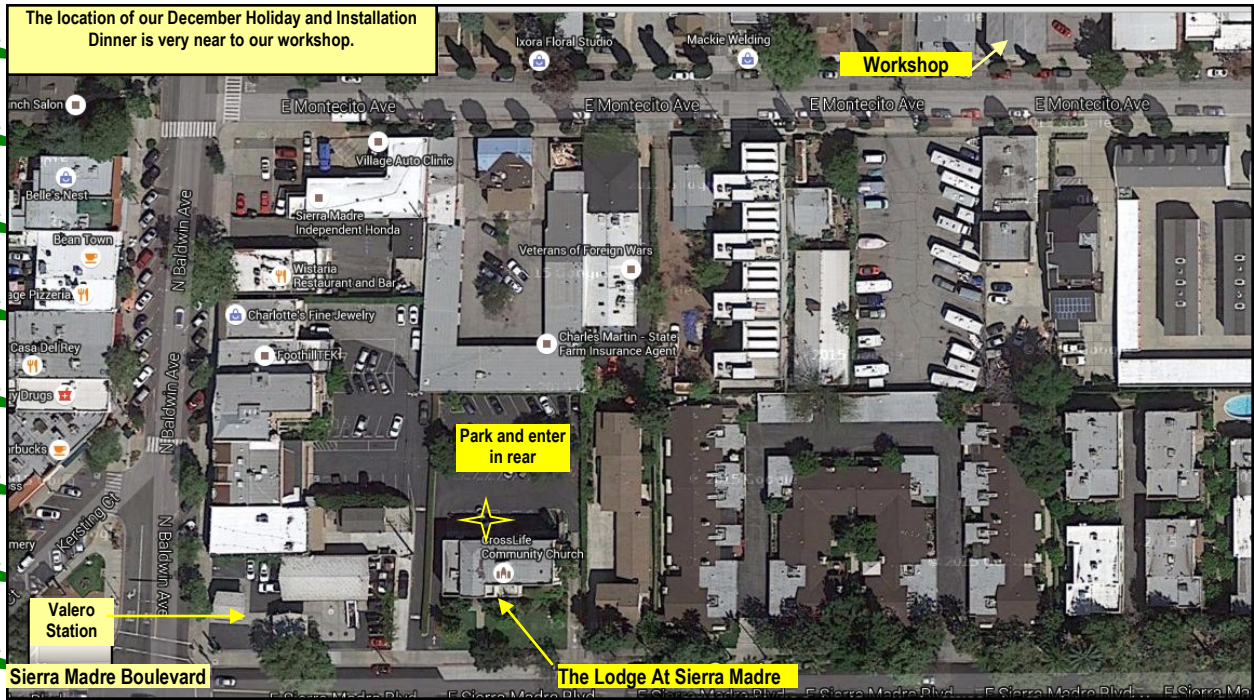


Questions? Ideas?
Contact Trudy Krose,
Hospitality Chair at
(323) 664-9598.



Holiday Meeting Directions

Take the 210 Freeway to Baldwin Avenue. North (toward mountains) to Sierra Madre Boulevard (in the center of Sierra Madre). There is a Valero gas station on the north-east corner of this intersection. The Lodge is just to the right of the gas station. Make a right turn and immediate left into the driveway to the Lodge (on the right of the hedge). If the parking lot is full, exit on the east side of The Lodge and seek parking on the street, or in the parking lot for the market across the street.



Valero Station on the corner. Use the driveway on the right of the hedge and park in the back of the Lodge, or on the street, or across the street in closed businesses.

